

**SUPSI**

# Guida installazione Arena

Windows 

 Guida per: **studenti** e **collaboratori**.

 Tempo di esecuzione: **20 min.**


## Introduzione

---

In questa guida sarà illustrato come installare il software Arena.

## Prerequisiti

---

- Possesso di un **account Windows SUPSI**
- PC collegato in rete SUPSI o in VPN (**Accesso alla VPN** )
- Pacchetto office a 64 bit

## SUPSI



Per utilizzare il programma è necessario attivare il collegamento VPN











### Primo passo

Accedere alla seguente share di rete e copiare in locale la cartella Arena.

<\\supsi.ch\DT\IDIDATTICA\Software per studenti\GESTIONALE>

### Secondo passo

Aprire la cartella “Arena” e avviare l’eseguibile “[autorun.exe](#)”.

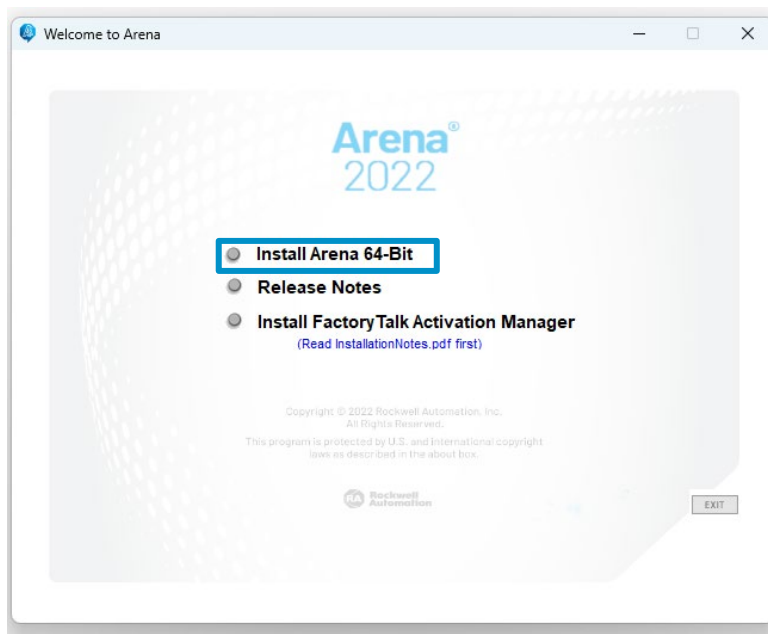
 Dependencies	25.02.2025 14:56	Cartella di file	
 Help	25.02.2025 14:54	Cartella di file	
 Install	25.02.2025 14:54	Cartella di file	
 Medialmage	25.02.2025 14:57	Cartella di file	
 Redist	25.02.2025 14:55	Cartella di file	
 Support	25.02.2025 14:55	Cartella di file	
 arena	24.08.2024 14:05	File ICO	146 KB
 autorun	24.08.2024 14:48	Applicazione	3'349 KB
 autorun	24.08.2024 14:05	Informazioni di in...	1 KB
 InstallationNotes	24.08.2024 14:08	Adobe Acrobat D...	407 KB

## SUPSI

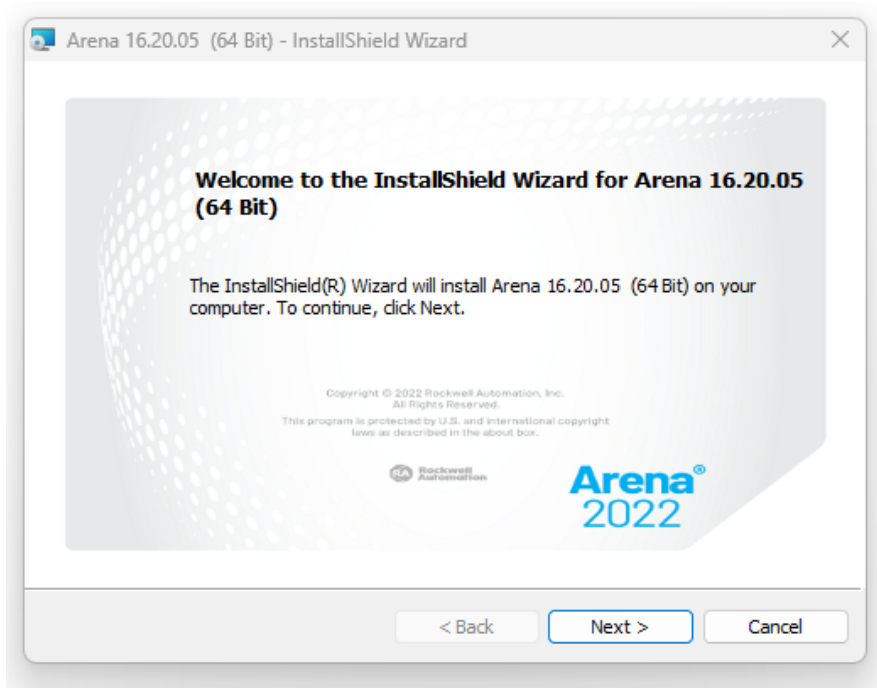
### Terzo passo

---

#### 1. Selezionare **Install Arena 64-Bit**

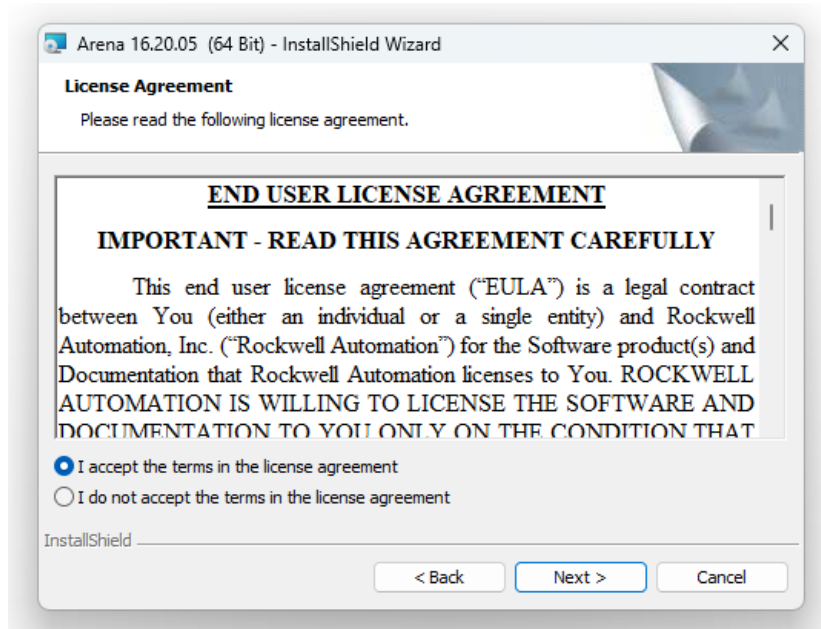


#### 2. Selezionare **Next**

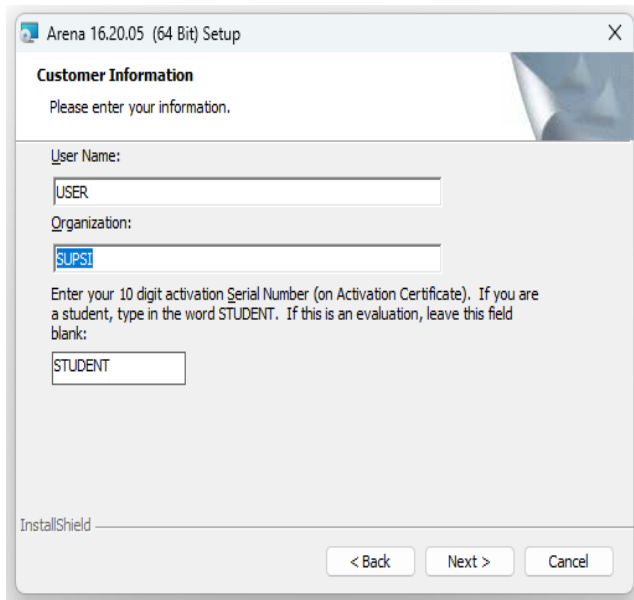


## SUPSI

3. Accettare i termini di licenza e proseguire selezionando “Next”



4. Compilare i campi nel seguente modo e proseguire selezionando “Next”



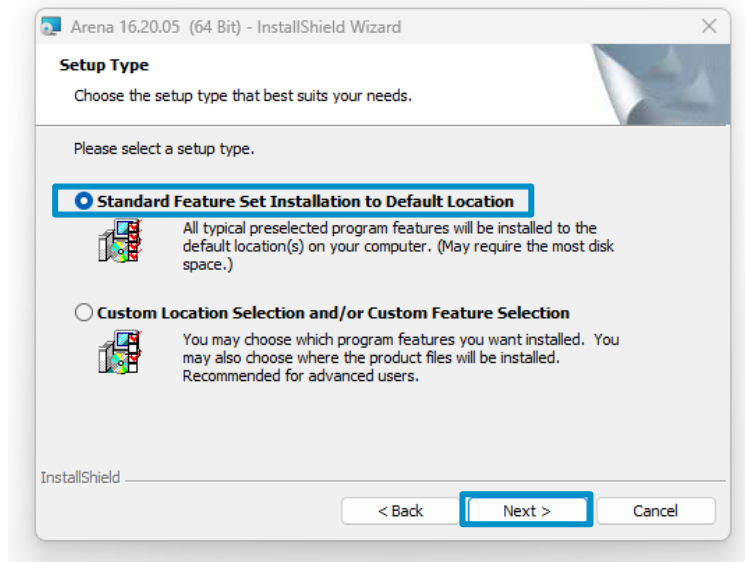
User Name: **USER**

Organization: **SUPSI**

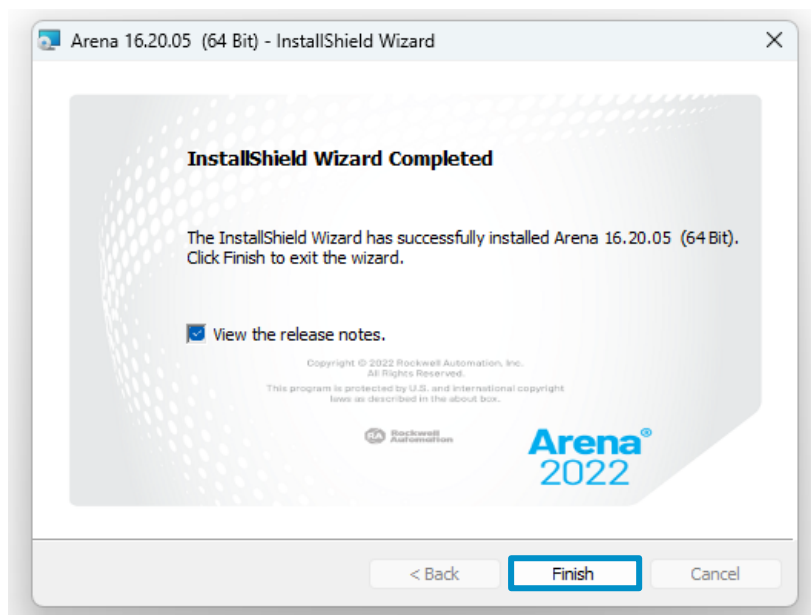
Digit activation: **STUDENT**

## SUPSI

5. Selezionare “Standard Feature” e selezionare “Next”



6. Selezionare “Finish”

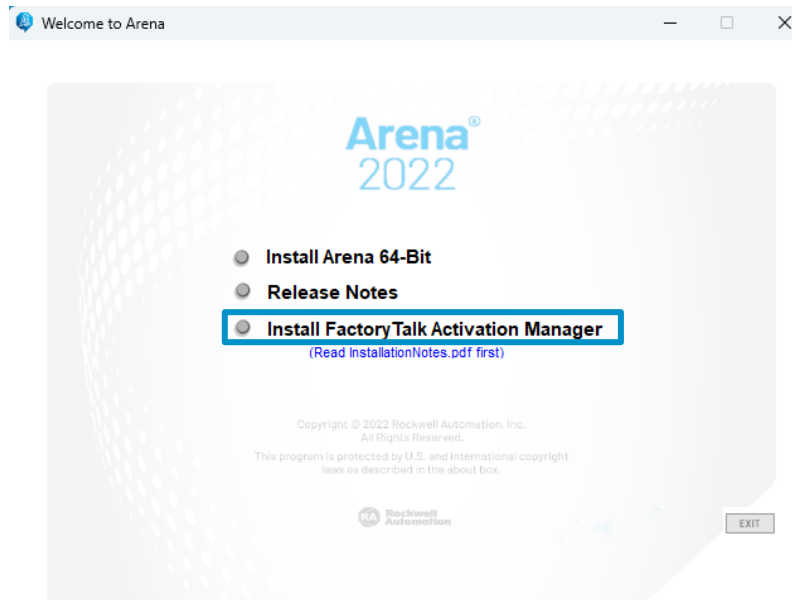


## SUPSI

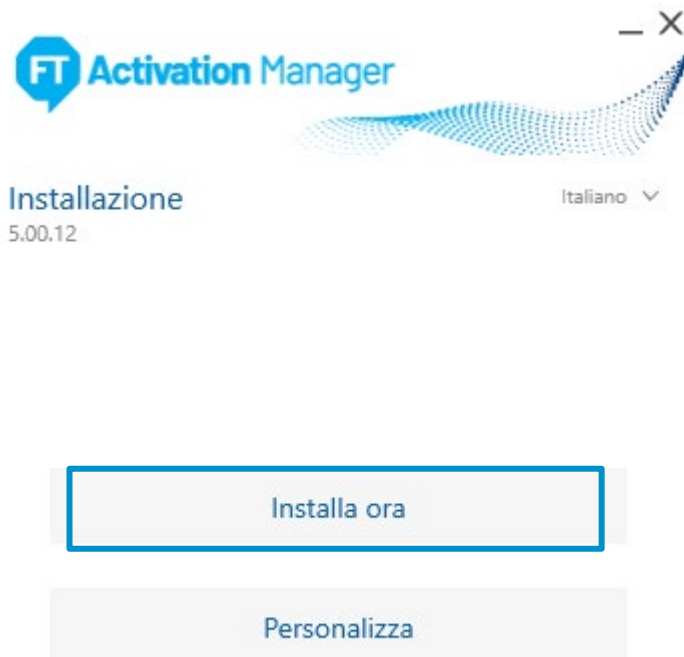
### Quarto passo

---

1. Ritornare sulla schermata iniziale e selezionare “Install FactoryTalk Activation Manager”



2. Selezionare “Installa ora”

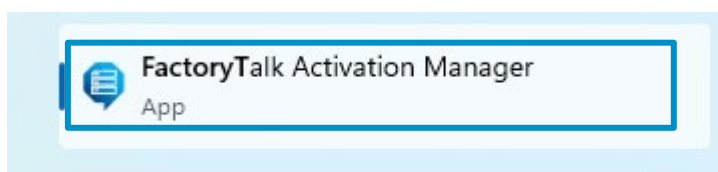


## SUPSI

3. Riavviare il computer cliccando “[Riavvia ora](#)”

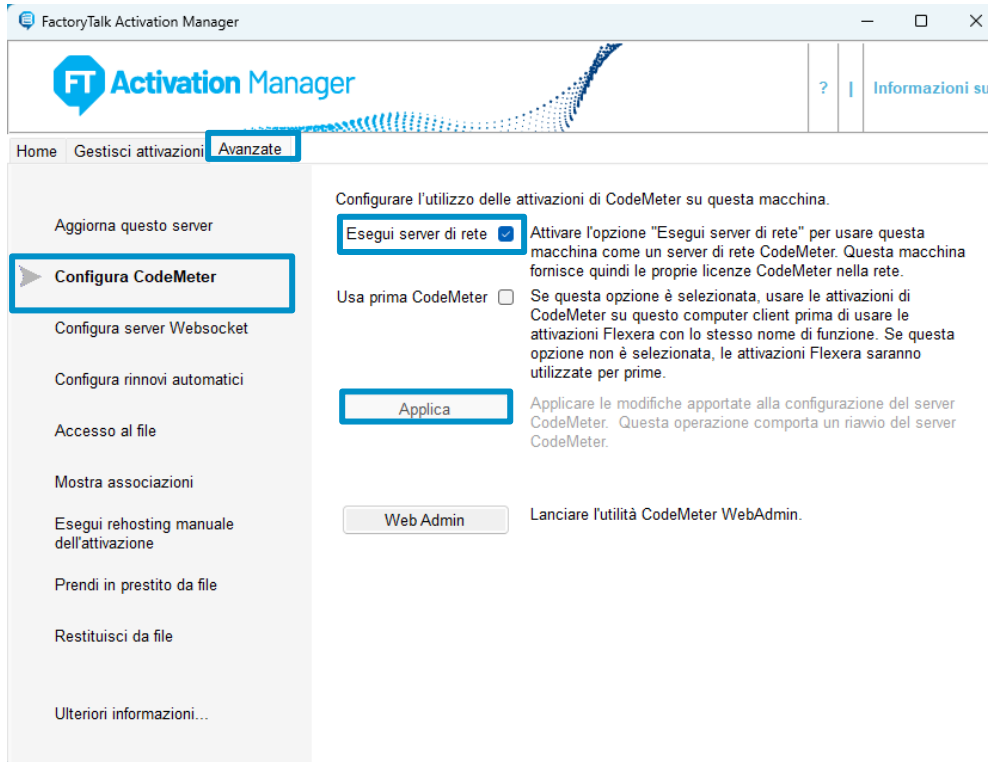


4. Dopo aver riavviato il computer aprire l'applicazione chiamata “[FactoryTalk Activation Manager](#)”

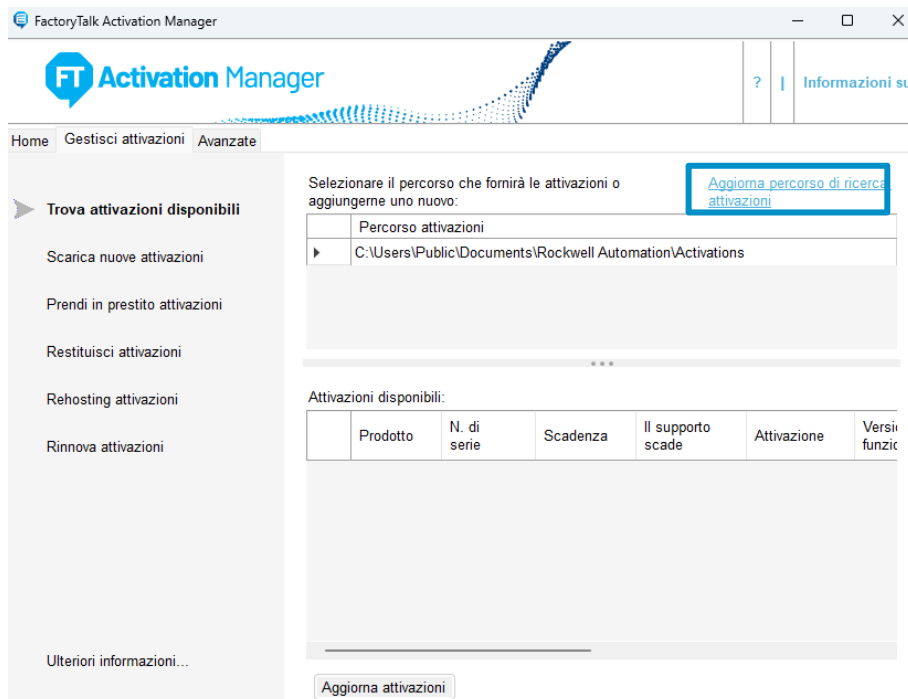


## SUPSI

5. Selezionare il tab “Advanced” → “Configure CodeMeter Server” spuntare l’opzione come da immagine e applicare le modifiche.

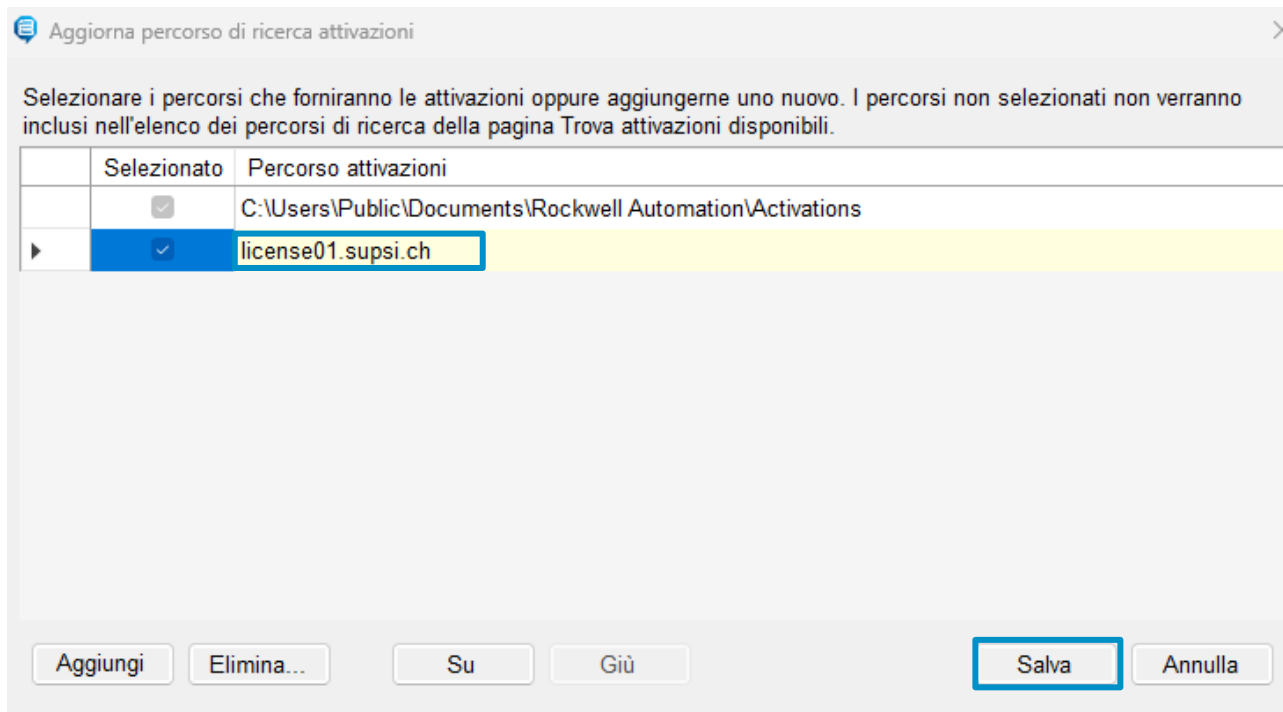


6. Selezionare il tab “Manage Activations” e cliccare su “Update Activation Search Path”



## SUPSI

7. Cliccare su "Add Server" inserire "license01.supsi.ch" e spuntare la casella.



8. Infine, cliccare il pulsante Save.



Se si riscontrassero problemi o per altre domande contattare il servizio informatico del proprio dipartimento:

Email: [helpit@supsi.ch](mailto:helpit@supsi.ch)

Contatto telefonico: +41 058 666 67 09